

Kera sit2sit – Assembly Guide

Instructions for assembly of the Kera sit2sit hoist.

Nov 2022



1 Unpacking List

- Rolling base with Knee Pad Covers
- Caregiver Handle (80 or 120 model, see handle sticker)
- Chestpad with Arm Cradle Cover and rubber grip
- Backstrap + Owner's Manual
- Laminated Quick Sheet (behind knees)

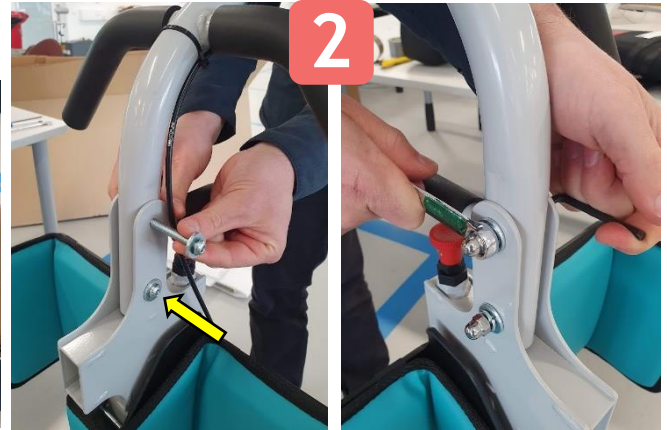
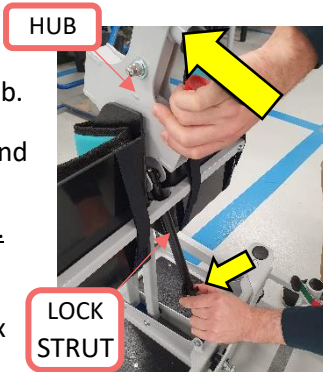


2 Fit handle


Firstly, reposition the Hub to the vertical position by squeezing the levers of the Lock Strut together and moving the Hub.

Position the Caregiver Handle in the Hub and fit the two M8 bolts with washer through Hub and Handle holes, from the cable side.

Add washer>spring washer>dome nut and tighten as tight as possible with a 5mm hex key and 13mm ring spanner.



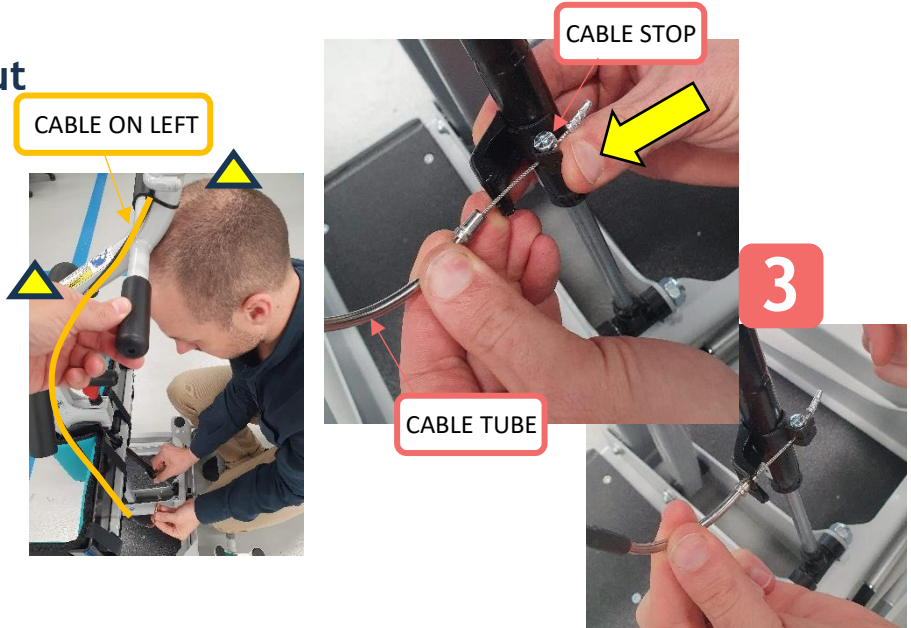
3 Fit cable end to Lock Strut

 Careful to support the Caregiver Handle from falling while performing this step. The Caregiver Handle will be free to move when you squeeze the Lock Strut lever.

Note: Make sure cable is running down left side of Hub.

Fit the Cable Stop to the right-hand side of the Lock Strut Lever first.

Use thumb to squeeze Lock Strut lever and fit the end of the Cable Tube into the Lock Strut bracket.

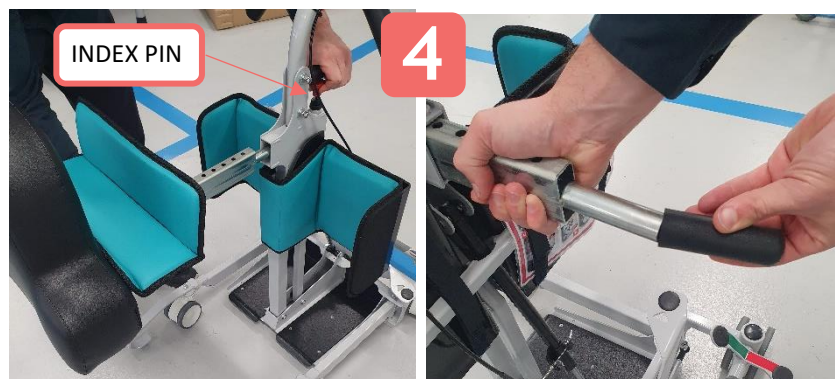


4 Insert Chestpad and grip

Slide Chestpad through Hub, careful at first not to catch the end of plastic strips inside.

Pull up the Index Pin to allow Chestpad to slide into position.

Fit rubber grip to the Chestpad Handle. A small amount of water will assist the grip sliding on.



5 Checks

Check correct function of Handle and locking system such that handle is locked in place until Lock Lever at top of handle is pulled and handle is free to move.

Check Backstrap is with Kera sit2sit, and Quick Instruction card is slipped behind Knee Pad Cover straps.